



SPPrac.
Specialised Project Practice

The forgotten pillar of sustainability: Unleashing human potential

Professor Kathy Michell, Director of the S+CUBE Research Unit, University of Cape Town



SAP® Certified
Integration with SAP S/4HANA®

SAP Certified
Powered by SAP NetWeaver

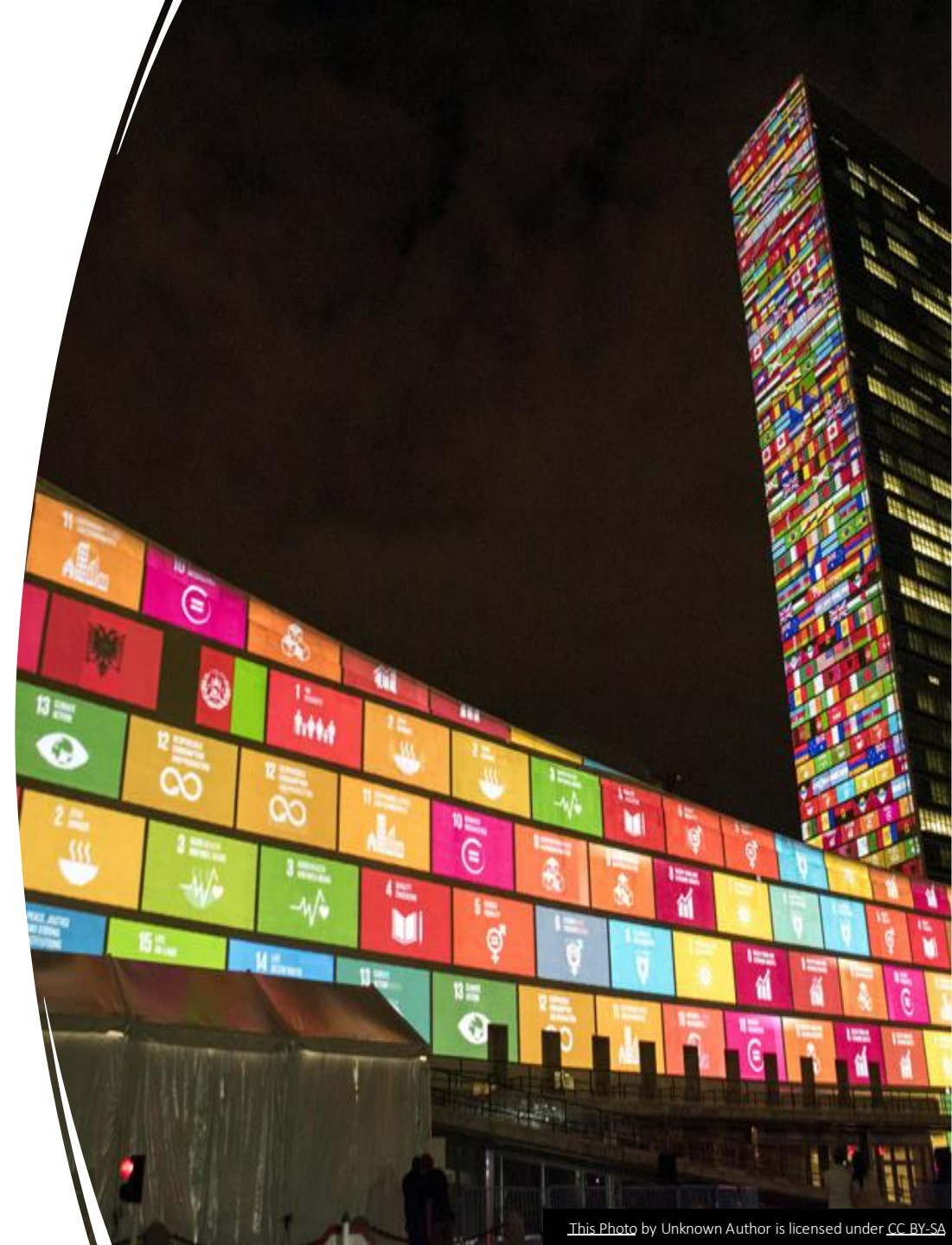


Presentation Outline

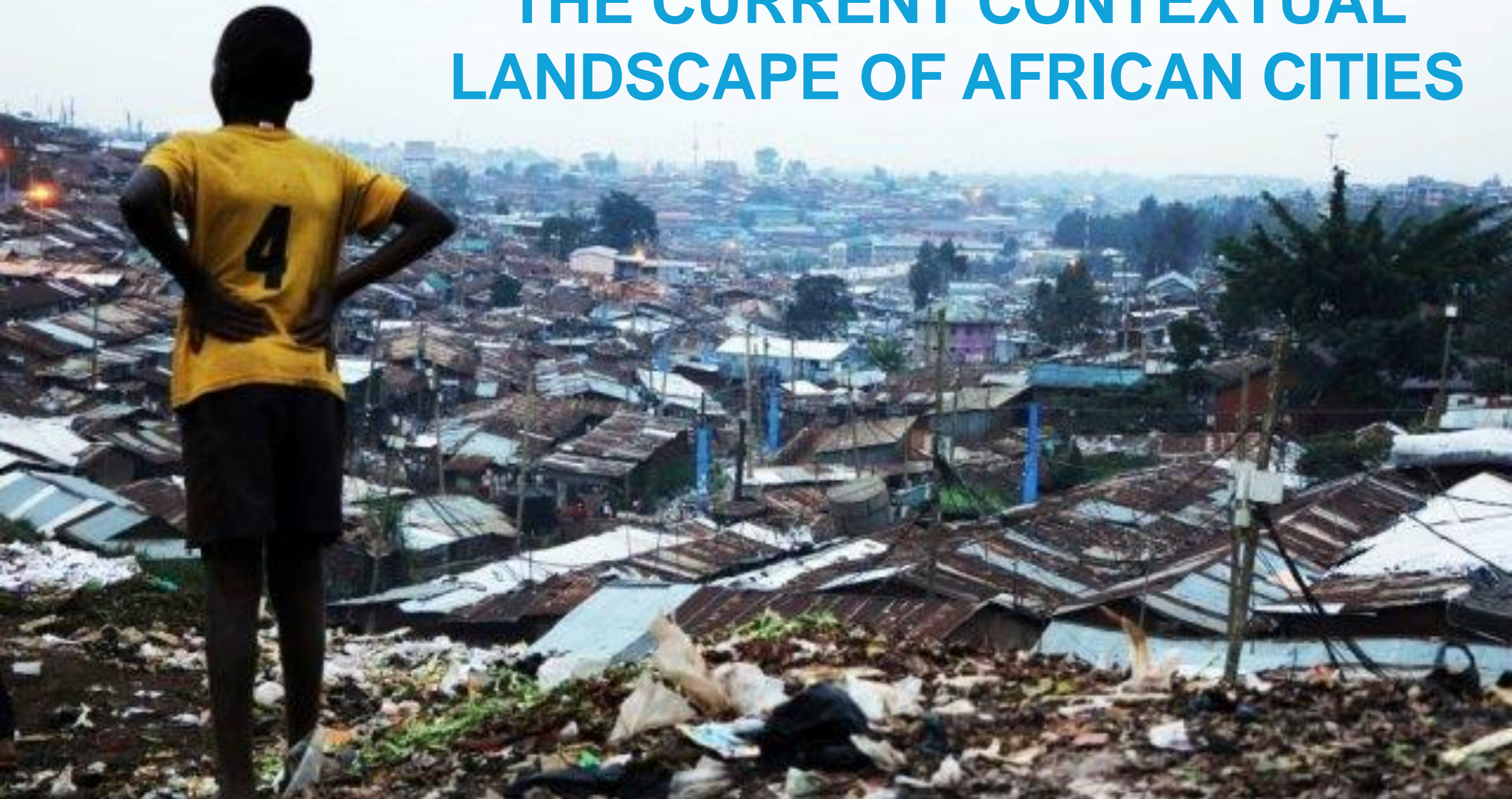
The contextual landscape and challenges

Sustainable development and management

Where do we go from here?



THE CURRENT CONTEXTUAL LANDSCAPE OF AFRICAN CITIES



Kibera, Nairobi, Kenya

- 2.5 million slum dwellers (60% of Kenya population)
- Occupy 6% of the land
 - >700 000 people
 - Average size of shack = 12ft x 12ft (8+ occupancy)
 - 20% have electricity
 - Central water collection from 2x water pipes
 - No sewage facilities
 - 50% unemployment rate



Old Fadama, Accra, Ghana

- Ghana's largest informal settlement
 - +/- 200 00 people
 - Interesting history of forced removals
 - No security of tenure
 - No infrastructure



Khayelitsha, Cape Town, South Africa

- 4297 informal settlements in South Africa
- 2 million households in South Africa in informal settlements
- **Khayelitsha**
 - +/- 2.4 million people
 - Blend of formal housing and informal housing





Economic

- Dual economies
- Government spending policies

Institutional Structures

- Institutional development
- Prevalence of non-state actors

CONTEXT SUMMARY

Source: Johnny Miller

- Rapid urbanisation
- Poverty
- Informal settlements
- Inequality (spatial and economic)
- Basic service delivery failure
- Local government limitations
- Poor urban governance
- Dual economies (informal & formal)
- Low transparency
- High levels of uncertainty
- Communal and/or customary rights

WHAT IS SUSTAINABLE DEVELOPMENT & MANAGEMENT?

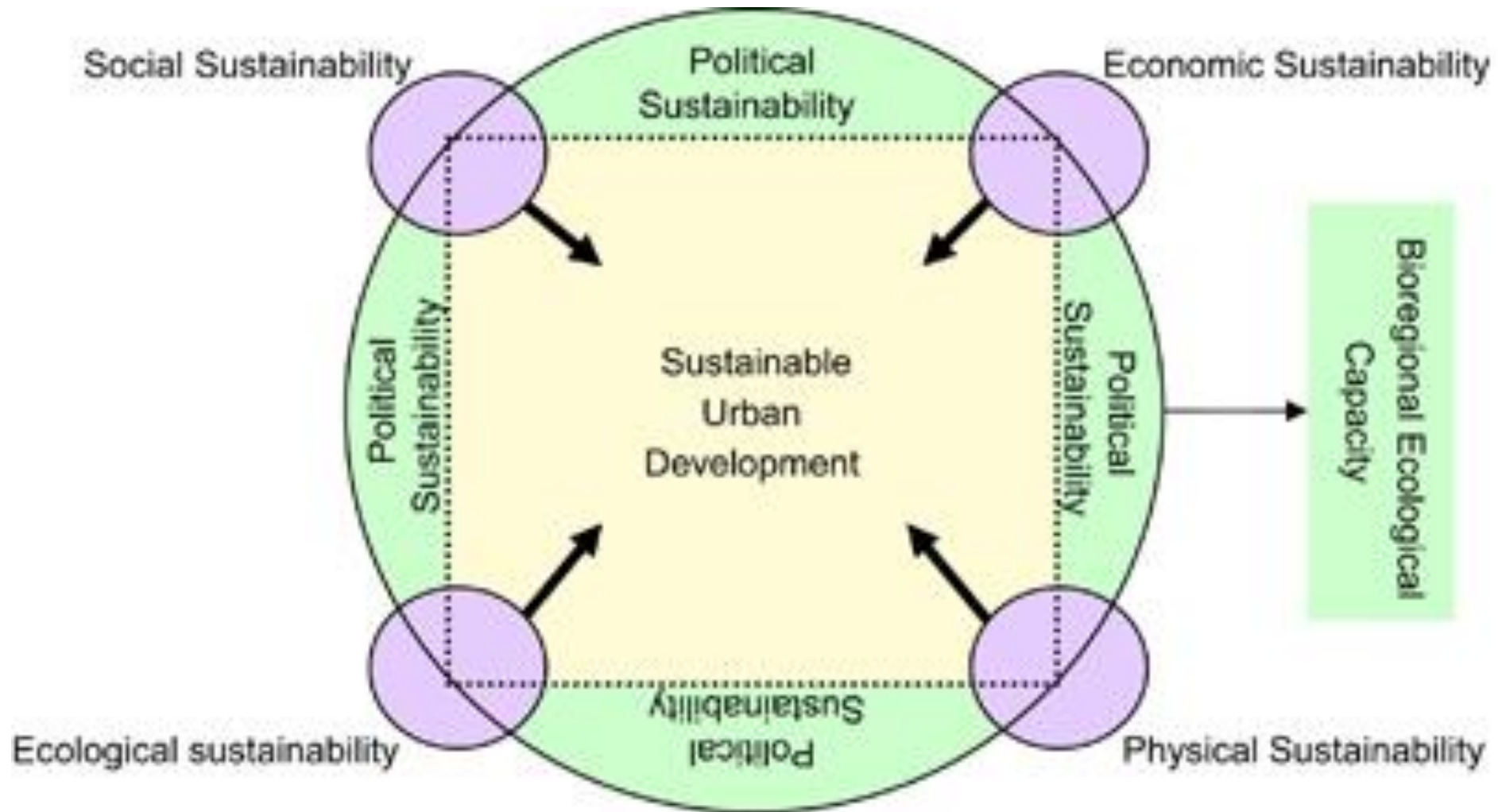
“Sustainable development seeks to meet the needs and aspirations of the present without compromising the ability to meet those of the future”

Brundtland Report (1987: 39)

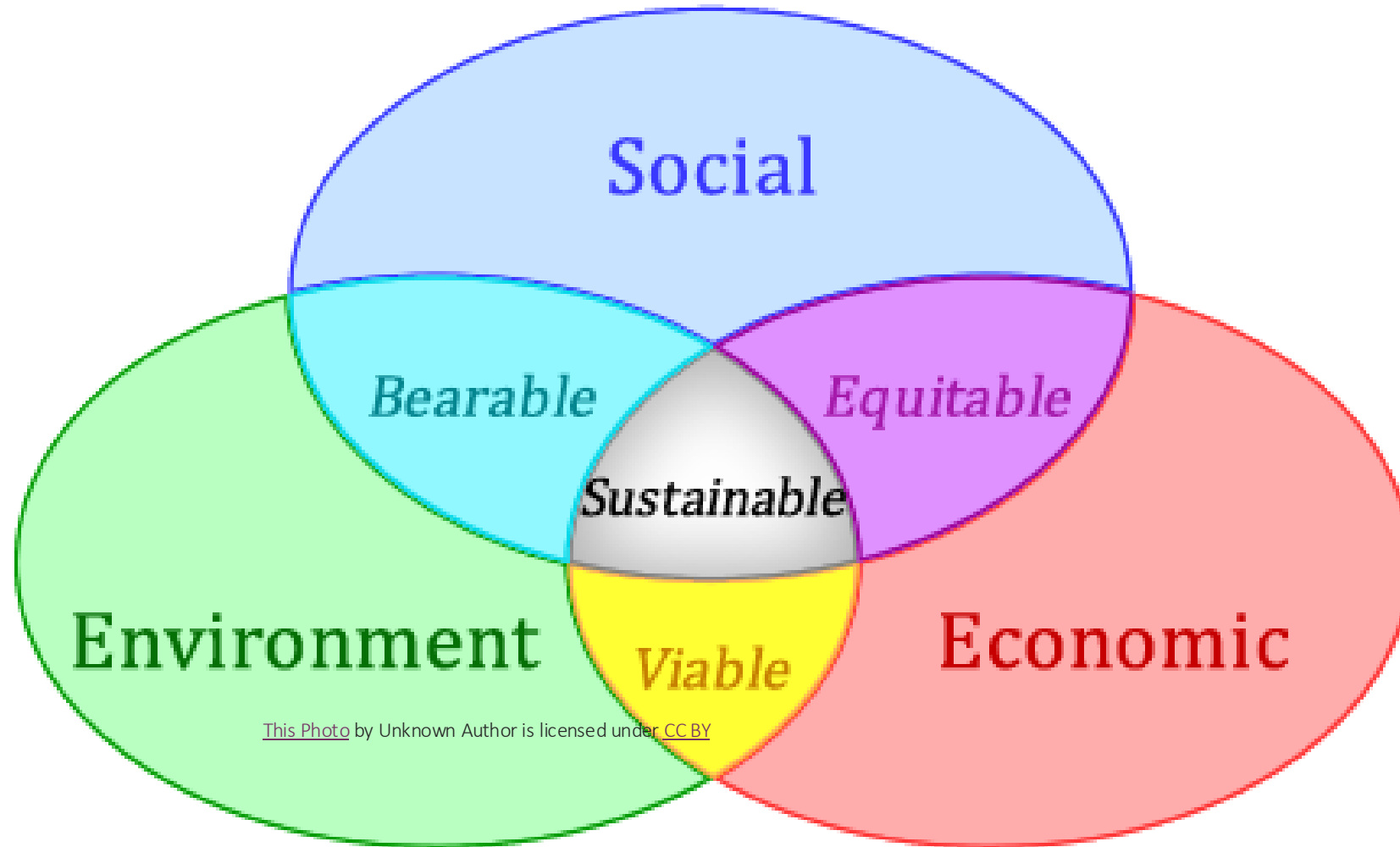


In Africa, Sustainable Development must focus on socio-economic issues such as poverty, education, employment, quality-of-life

THE FIVE DIMENSIONS OF URBAN SUSTAINABILITY



What does it mean to be “sustainable”?



[This Photo](#) by Unknown Author is licensed under [CC BY](#)

FM Defined – Fourth Generation

Focus on space creation & innovation
inspired by the performance of the building

- ISO 41011:2017 “*organizational function which integrates people, place and process within the built environment with the purpose of improving the quality of life of people and the productivity of the core business*”



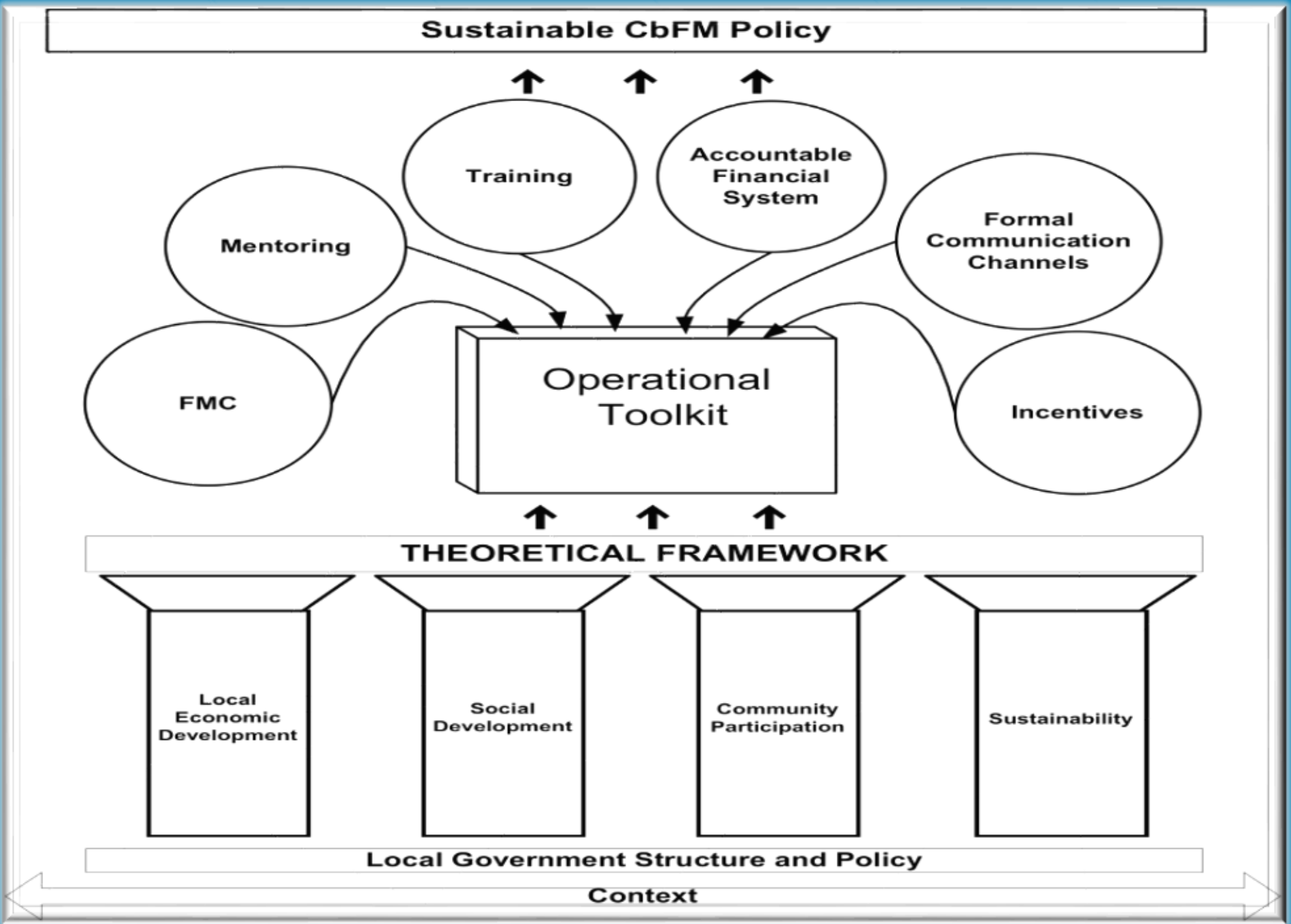


Community- based Facilities Management

Community-based FM: 4 dimensions

- Engagement & collaboration
- Enabling environment
- Balance economic, social & environmental factors
- Quality of life





What we know from research...work in progress

Unique & complex

Community as a resource

Innovation

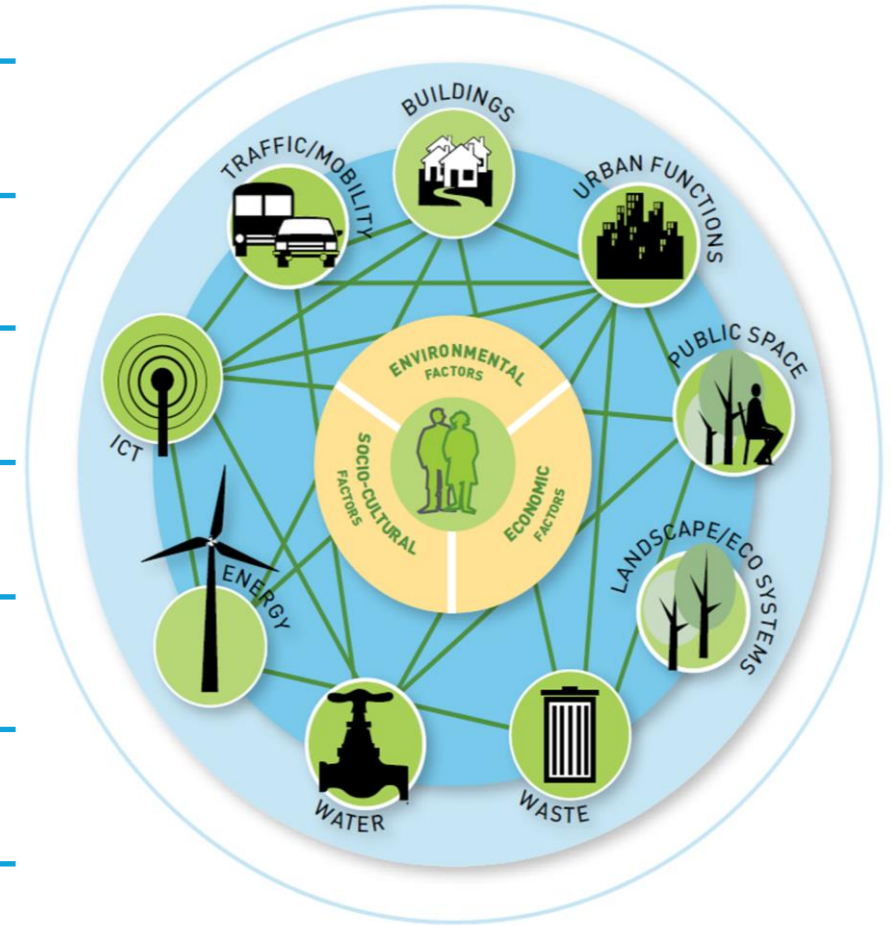
Participatory, collaborative & integrative

Good governance

Eradication of the silo professional

Holistic & systemically grounded lense

Be “S-centric” in the ESG’s + develop measures



WHAT THIS MEANS FOR SUSTAINABLE DEVELOPMENT AND MANAGEMENT IN AFRICA

Interventions must be strategic, appropriate,
integrated & well-timed

Intervention must be collaborative, empowering,
enabling, inclusive and transparent

Acknowledge that citizens are not passive
recipients of the built fabric

Challenge the “silo” nature of the professions & what a
professional commitment to sustainability truly means





SPPrac.
Specialised Project Practice

Thank You